



# The Future of Strength and Clarity





# POLYCARBONATE SHEETS

The Future of Strength and Clarity

Vol.01



# Clear Diamond Polycarbonate Sheet

<b>Material</b>	:Polycarbonate
<b>Thickness</b>	:1.5 mm to 4 mm
<b>Size</b>	: 2' ft to 7' ft
<b>Color</b>	:Clear, Brown, Sky Blue, Grey, Green
<b>Surface Finish</b>	:UV Coated
<b>Brand</b>	:Skylite
<b>Length</b>	:100' ft (Customise size available)

Diamond Polycarbonate Sheets is a super tough and super resilient corrugated polycarbonate sheet with an attractive diamond embossed pattern. The sheets are stronger and more rigid, providing superior spanning and load bearing capabilities. Naturally clear, these sheets provide exceptional glass like light transmission. Diamond polycarbonate sheets can also withstand extremes of temperature more readily than other material and with Long life, they are also more resistant to the long-term effects of weathering.





# Brown Diamond Polycarbonate Sheet

<b>Material</b>	:Polycarbonate
<b>Thickness</b>	:1.5 mm to 4 mm
<b>Size</b>	:2' ft to 7' ft
<b>Color</b>	:Clear, Brown, Sky Blue, Grey, Green
<b>Surface Finish</b>	:UV Coated
<b>Brand</b>	:Skylite
<b>Length</b>	:100' ft (Customise size available)

Diamond Polycarbonate Sheets is a super tough and super resilient corrugated polycarbonate sheet with an attractive diamond embossed pattern. The sheets are stronger and more rigid, providing superior spanning and load bearing capabilities. Naturally clear, these sheets provide exceptional glass like light transmission. Diamond polycarbonate sheets can also withstand extremes of temperature more readily than other material and with Long life, they are also more resistant to the long-term effects of weathering.







# Sky Blue Diamond Polycarbonate Sheet

<b>Material</b>	:Polycarbonate
<b>Thickness</b>	:1.5 mm to 4 mm
<b>Size</b>	:2' ft to 7' ft
<b>Color</b>	:Clear, Brown, Sky Blue, Grey, Green
<b>Surface Finish</b>	:UV Coated
<b>Brand</b>	:Skylite
<b>Length</b>	:100' ft (Customise size available)

Diamond Polycarbonate Sheets is a super tough and super resilient corrugated polycarbonate sheet with an attractive diamond embossed pattern. The sheets are stronger and more rigid, providing superior spanning and load bearing capabilities. Naturally clear, these sheets provide exceptional glass like light transmission. Diamond polycarbonate sheets can also withstand extremes of temperature more readily than other material and with Long life, they are also more resistant to the long-term effects of weathering.



# Grey Diamond Polycarbonate Sheet

<b>Material</b>	:Polycarbonate
<b>Thickness</b>	:1.5 mm to 4 mm
<b>Size</b>	:2' ft to 7' ft
<b>Color</b>	:Clear, Brown, Sky Blue, Grey, Green
<b>Surface Finish</b>	:UV Coated
<b>Brand</b>	:Skylite
<b>Length</b>	:100' ft (Customise size available)

Diamond Polycarbonate Sheets is a super tough and super resilient corrugated polycarbonate sheet with an attractive diamond embossed pattern. The sheets are stronger and more rigid, providing superior spanning and load bearing capabilities. Naturally clear, these sheets provide exceptional glass like light transmission. Diamond polycarbonate sheets can also withstand extremes of temperature more readily than other material and with Long life, they are also more resistant to the long-term effects of weathering.







# Green Diamond Polycarbonate Sheet

<b>Material</b>	:Polycarbonate
<b>Thickness</b>	:1.5 mm to 4 mm
<b>Size</b>	:2' ft to 7' ft
<b>Color</b>	:Clear, Brown, Sky Blue, Grey, Green
<b>Surface Finish</b>	:UV Coated
<b>Brand</b>	:Skylite
<b>Length</b>	:100' ft (Customise size available)

Diamond Polycarbonate Sheets is a super tough and super resilient corrugated polycarbonate sheet with an attractive diamond embossed pattern. The sheets are stronger and more rigid, providing superior spanning and load bearing capabilities. Naturally clear, these sheets provide exceptional glass like light transmission. Diamond polycarbonate sheets can also withstand extremes of temperature more readily than other material and with Long life, they are also more resistant to the long-term effects of weathering.



# Clear Checks

## Polycarbonate Sheet



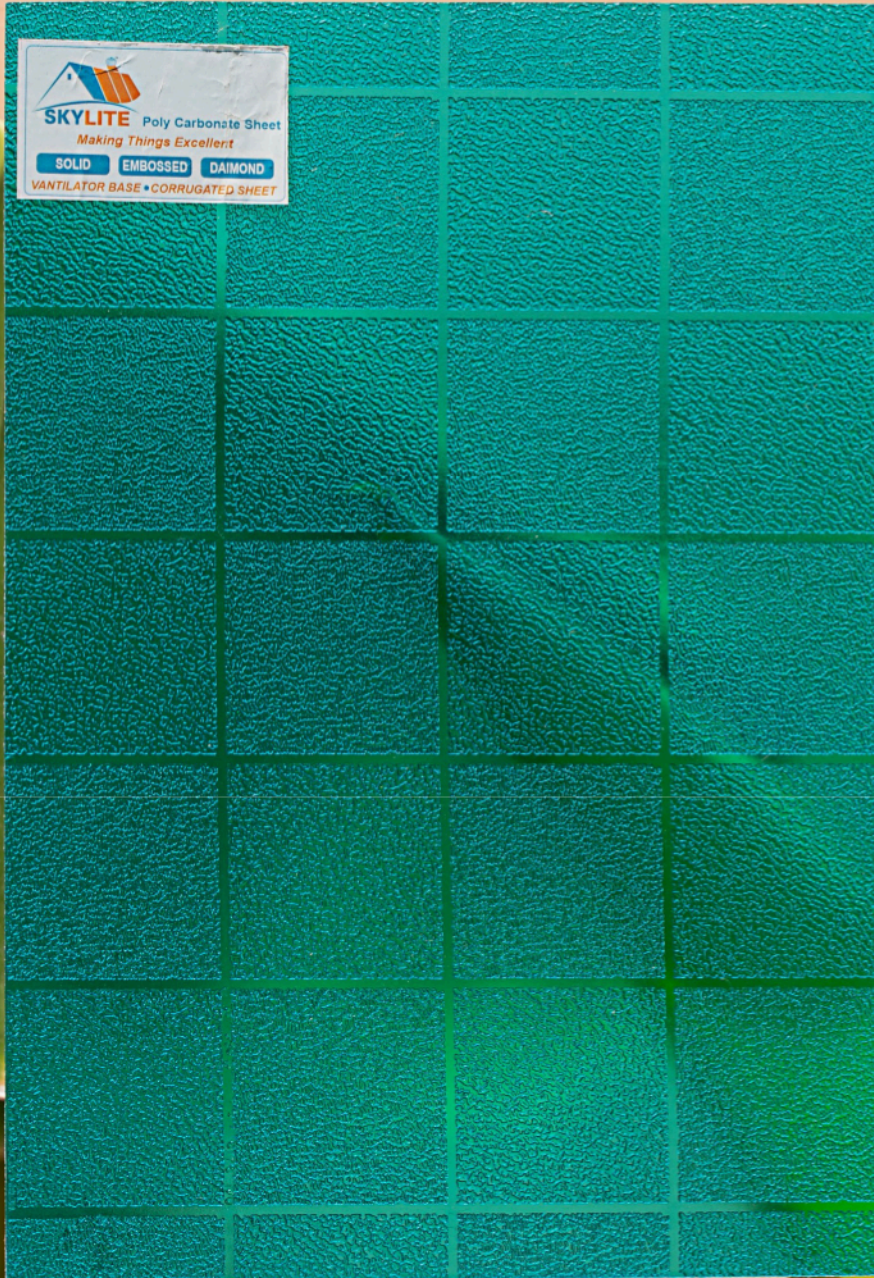
<b>Material</b>	:Polycarbonate
<b>Thickness</b>	:1.5 mm to 4 mm
<b>Size</b>	:2' ft to 7' ft
<b>Color</b>	:Clear, Sky Blue
<b>Surface Finish</b>	:UV Coated
<b>Brand</b>	:Skylite
<b>Length</b>	:100' ft (Customise size available)

Transform your spaces with the stylish and durable Checks Pattern Polycarbonate Sheets. These sheets are perfect for adding a modern touch to both residential and commercial projects. Featuring a unique checks pattern, they offer an appealing aesthetic while maintaining excellent functionality.



# Blue Checks

## Polycarbonate Sheet



<b>Material</b>	:Polycarbonate
<b>Thickness</b>	:1.5 mm to 4 mm
<b>Size</b>	:2' ft to 7' ft
<b>Color</b>	:Clear, Sky Blue
<b>Surface Finish</b>	:UV Coated
<b>Brand</b>	:Skylite
<b>Length</b>	:100' ft (Customise size available)

Transform your spaces with the stylish and durable Checks Pattern Polycarbonate Sheets. These sheets are perfect for adding a modern touch to both residential and commercial projects. Featuring a unique checks pattern, they offer an appealing aesthetic while maintaining excellent functionality.



# Compact Clear

## Polycarbonate Sheet

<b>Material</b>	:Polycarbonate
<b>Thickness</b>	:1.5 mm to 4 mm
<b>Size</b>	:2' ft to 7' ft
<b>Color</b>	:Clear, Sky Blue
<b>Surface Finish</b>	:UV Coated
<b>Brand</b>	:Skylite
<b>Length</b>	:100' ft (Customise size available)

Discover the superior quality and clarity of our Compact Clear Solid Polycarbonate Sheet. Engineered for strength and transparency, these sheets are the perfect solution for a wide range of applications, offering exceptional durability without compromising on visual appeal.





# PROFILE CORRUGATED POLYCARBONATE SHEETS

The Future of Strength and Clarity



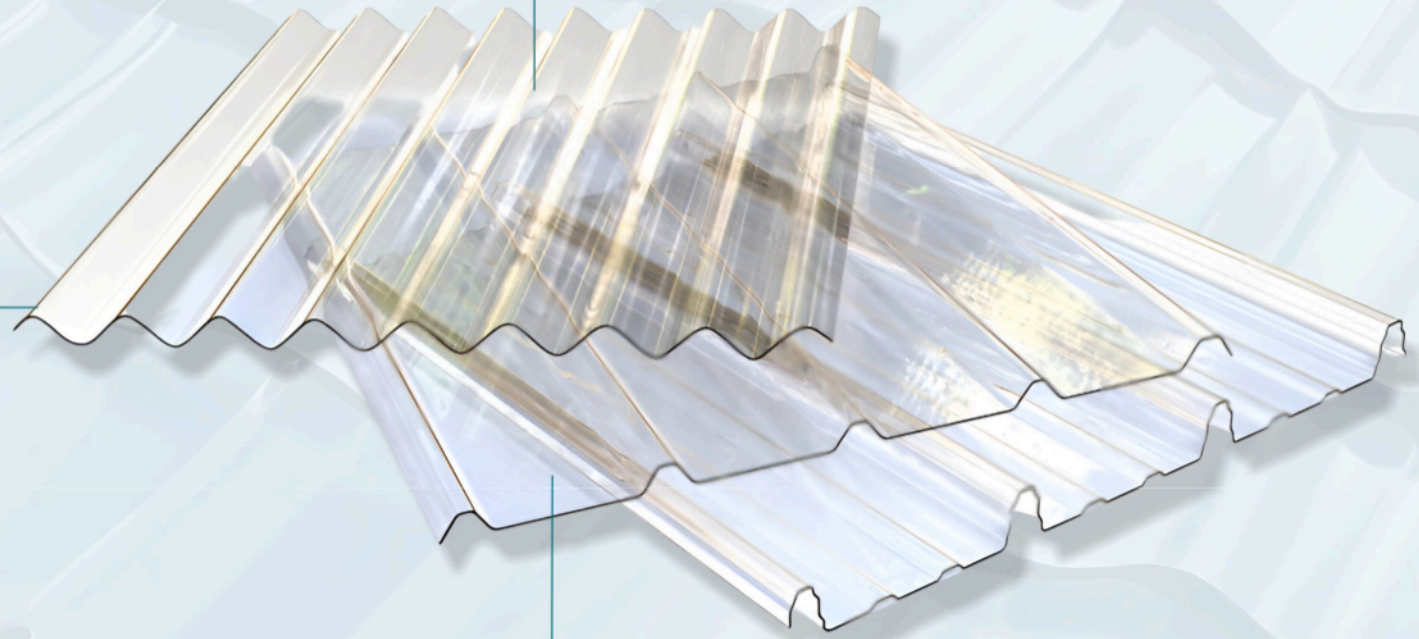
High Fire  
Performance



High Light  
Transmission



Wether  
Resistance



**POLYCARBONATE  
CORRUGATED SHEETS**



# AC Corrugation

## Polycarbonate Sheet

<b>Material</b>	:Polycarbonate
<b>Thickness</b>	:1.2 - 1.5 - 2 mm
<b>Color</b>	:Clear
<b>Surface Treatment</b>	:Embossed
<b>Transparency</b>	:80 %
<b>Length</b>	:8' - 10' - 12' ft

The Corrugated Polycarbonate Profile Sheet is a durable, lightweight material ideal for roofing and cladding. It provides excellent light transmission, UV protection, and weather resistance, making it perfect for outdoor applications. Easy to install and maintain, it suits both residential and commercial projects.

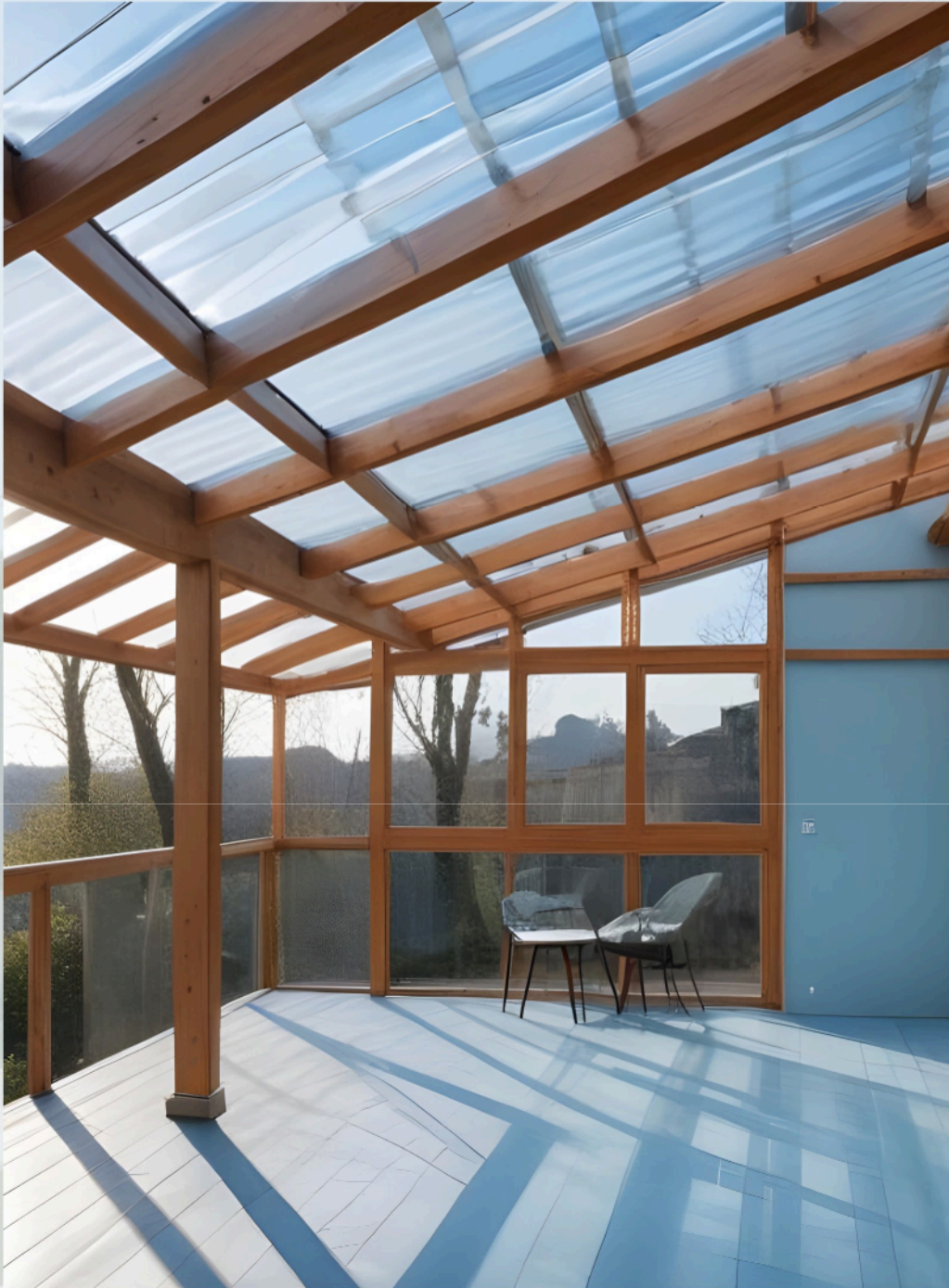




# Profile Corrugated Polycarbonate Sheet

<b>Material</b>	:Polycarbonate
<b>Thickness</b>	:1.2 - 1.5 - 2 mm
<b>Size</b>	:8 - 10 - 12 - 14' ft (Customise size available)
<b>Color</b>	:Clear
<b>Surface Finish</b>	:UV Coated
<b>Brand</b>	:Skylite

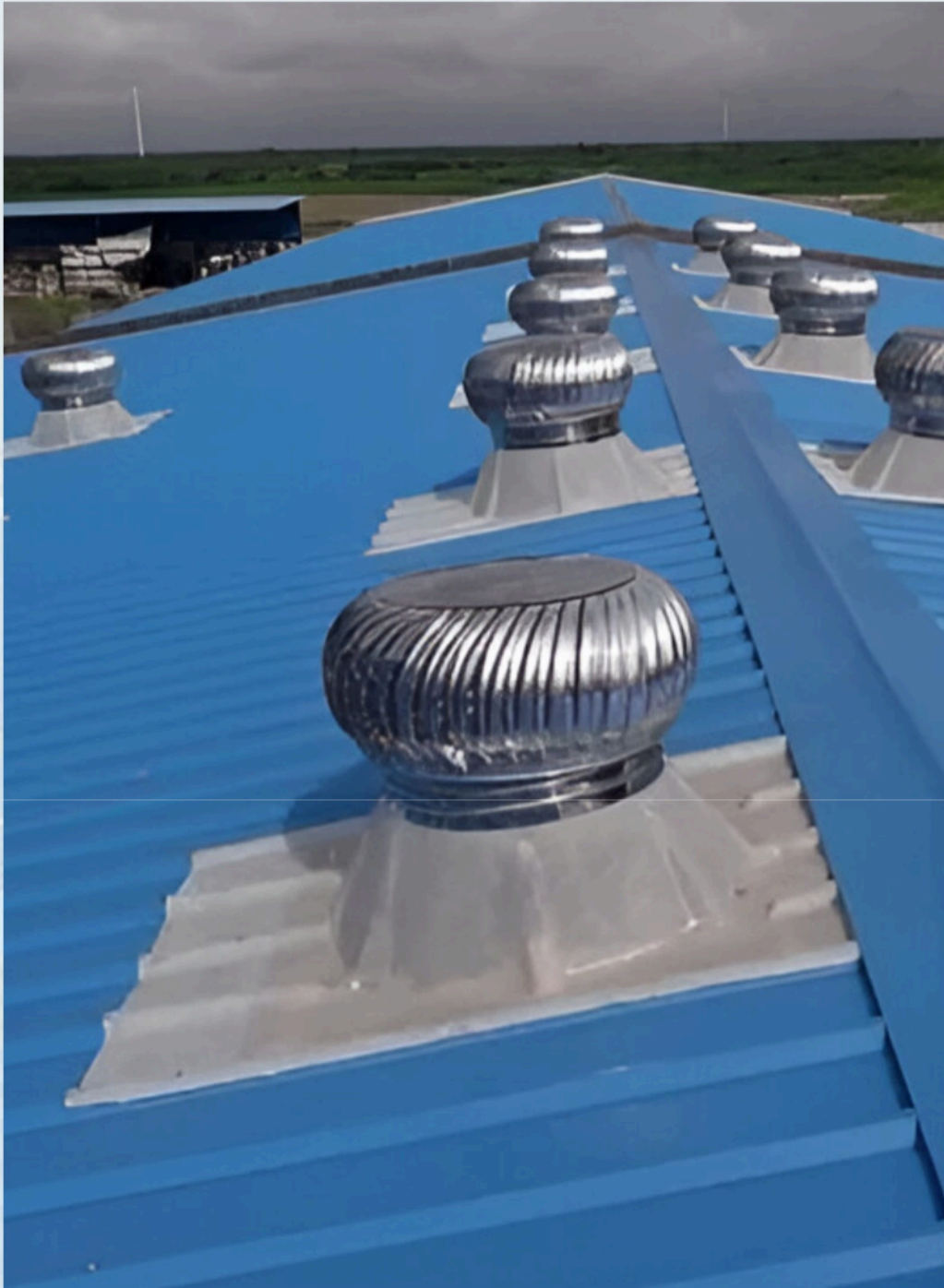
The Corrugated Polycarbonate Profile Sheet is a durable, lightweight material ideal for roofing and cladding. It provides excellent light transmission, UV protection, and weather resistance, making it perfect for outdoor applications. Easy to install and maintain, it suits both residential and commercial projects.





# BASEPLATE

The Future of Strength and Clarity



# Base Plate

## Polycarbonate Sheet

<b>Material</b>	:Polycarbonate
<b>Thickness</b>	:2 mm
<b>Size</b>	:8 - 10 - 12' ft
<b>Color</b>	:Clear
<b>Surface Finish</b>	:UV Coated
<b>Brand</b>	:Skylite

The Skylite Polycarbonate Base Plate is a durable, lightweight, and versatile component ideal for construction and architectural applications. Made from robust polycarbonate, it offers excellent clarity, UV protection, and weather resistance, making it perfect for roofing, skylights, canopies, and greenhouses. Its ease of installation with pre-defined profile, combined with good thermal insulation and compliance with fire safety standards, ensures reliable performance and safety. Additionally, it requires minimal maintenance, resisting discoloration and cracking, which contributes to its long-lasting effectiveness in both residential and commercial projects.



# Turbo Ventilator

The Future of Strength and Clarity



# Turbo Ventilator

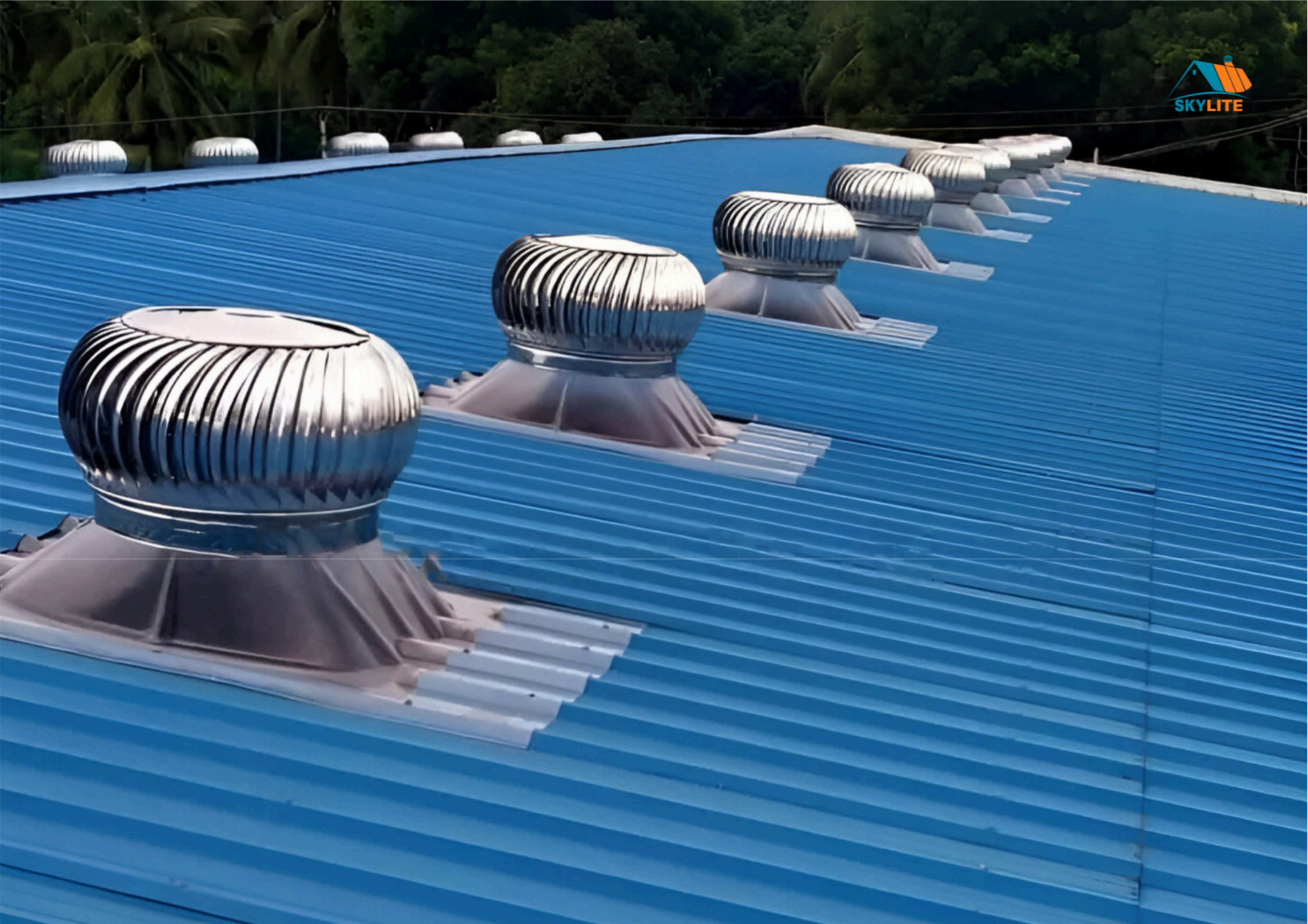
## Stainless Steel

Automation Grade	:Automatic
Color	:Silver
Brand	:Skylite
Air Absorption	:6.5 km/h
Material	:Stainless Steel
Low Noise	:Yes

- ALSS 21"
- ALSS 24"
- FULL SS 21"
- FULL SS24"
- SSPP RING 24"
- ALSSPP RING 24"

Wind turbine ventilators use wind power to expel heat, smoke, and humidity, lowering indoor temperatures and allowing fresh air in. They are cost-effective, maintenance-free, and environmentally friendly, requiring no electricity. Widely used in various buildings, their installation depends on wind velocity, temperature, environment, and building size.







# Self Drilling Screw

## Zinc Coated

Usage/Application :Roofing  
Material :Carbon Steel  
Head Type :Hex flange  
Material Grade :1022  
Surface Finishing :Zinc coated  
Washer :Epdm  
Head Shape :Hex  
Manufacturing By :Skylite

### Screw Size

10 x 19 mm

12 x 55 mm

10 x 19 mm np

12 x 65 mm

10 x 25 mm

12 x 68 mm

12 x 25 mm

12 x 75 mm

12 x 35 mm

12 x 70 mm np

12 x 45 mm

12 x 75 mm np





# Thank You

We appreciate your interest in our polycarbonate products. Your support means everything to us. For more information or assistance, please contact us anytime.

